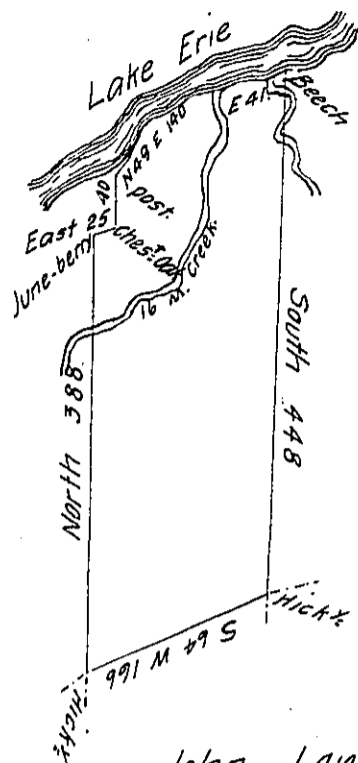


Thomas Gallaher.



John Dundass.

John Lowery.

A Draught of a tract of land in Greenfield township Erie County including the mouth of the Sixteen Mile creek, on Lake Erie surveyed the 16th of October 1801 for James Lowery by Virtue of his Actual Settlement, and resurveyed the 1st of September 1802 in pursuance of a warrant granted to the said James Lowery dated the 26th of March 1802 Containing 390 Acres and allowance. It being the same tract of land which was said to have been surveyed on a warrant dated the 13th of April 1792 granted to Ebenezer Hazzard on conditions of Actual settlement and improvement whereof Default hath occurred.

To Samuel Cochran Esq^r }
Surveyor General.

John Cochran D. S.

N. B. this tract improved the first of March 1795

IN TESTIMONY that the above is a copy of the original remaining on file in the Department of Internal Affairs of Pennsylvania, made conformably to an Act of Assembly approved the 16th day of February, 1833, I have hereunto set my Hand and caused the Seal of said Department to be affixed at Harrisburg, this twenty-first day of February 1906

Isaac R. Brown
Secretary of Internal Affairs.